

# Contents

Blind Mellon Software



## **Disk Image**

**Bar Chart**

**Pie Chart**

**By Extension**

**By Directory**

**Status Bar**

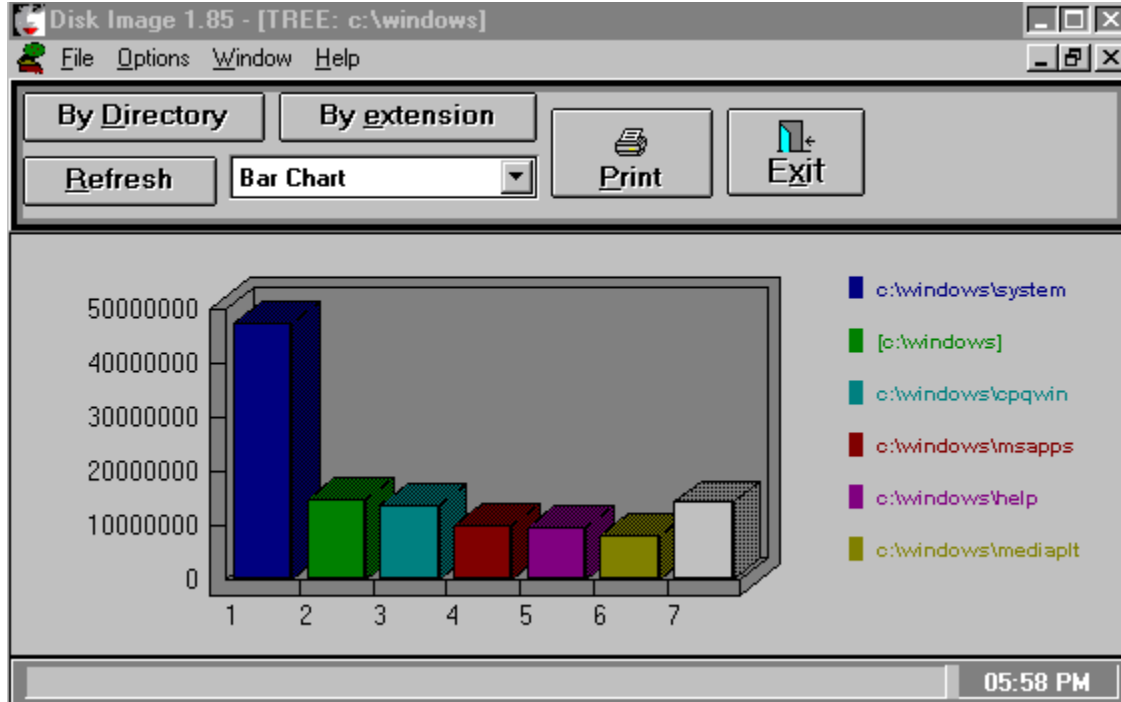
**Additional Info**

**Slices**

**Registration**

**Other Products**

# Bar Chart



## Graph Type

Select a type of graph from the combo box, pie chart or bar graph. You may use the refresh button to redraw the same graph or use the directory/extension button to draw a new graph. Select the print button to print the graph once it is displayed.

# Status Bar

Double click with the left mouse button on the status bar to get additional options for display.

Copyright Blind Mellon Software 95

## Additional Info

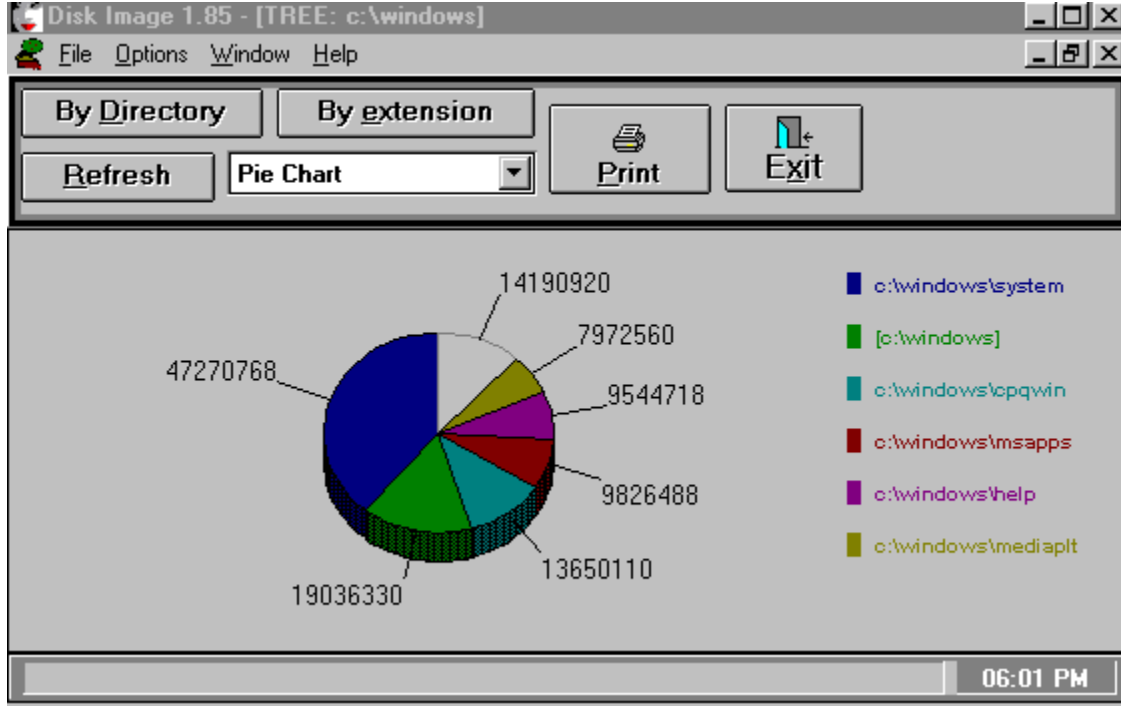
Select a bar or pie slice once the graph has been displayed to see detail information displayed on the status bar at the bottom of the screen.

Copyright Blind Mellon Software 95

## By Directory

Select the by directory option to see disk space allocation by directories, largest to smallest. Once the graph has been displayed click on a slice or bar to see the details on the status bar at the bottom of the screen. If you **double click on a bar or slice you will get a breakdown of that component.**

# Pie Chart



Select a type of graph from the combo box, pie chart or bar graph. You may use the refresh button to redraw the same graph or use the directory/extension button to draw a new graph. Select the print button to print the graph once it is displayed.

# By Extension

Select the by extension option to see disk space allocation by file type, largest to smallest. Once the graph has been displayed click on a slice or bar to see the details on the status bar at the bottom of the screen.

# Slices

Determines the number of individual slices that will be displayed in the total breakdown, the final slice will be called "other".





